

Gstaad Paradise View Chalet with Outdoor Jacuzzi:)

 Switzerland - Gstaad Region - Rougemont



DETAILS

From the 3000 meter high glacier where you can ski even in august, to hiking, mountain biking, rafting, canyoning, ballooning. The house is just 5 minutes away from the first ski slopes and the Gstaad Super Ski Region. From the famous Cailler chocolate factory just next to the impressive castle and medieval village of Gruyère, to an amazing day organized in a typical swiss farm with cheese manufacturing and a typical swiss dinner, with some good surprises waiting for you. We offer a fully equipped authentic kitchen including a special machine to enjoy a Raclette or a Fondue. There is a stunning view, with a paradise room for children with games and toys, 2 fire places and also WIFI, DVD's and music. The Garden level bedroom has double-sized bed which can sleep 2 guests. The room has ensuite shower and with direct with access to terrace and garden. The Mezzanine entrance floor sleeps 1 guest. There is a bedroom with double-sized bed in entrance floor which can accommodate 2 guests and with direct access to terrace and garden. Toilet and shower is also available in the entrance floor. Living room is available in the first floor which has sofabed that can accommodate 2 guests There is another single bed in tv saloon. Mezzanine ideal for kids sleeps 2 singles Master Suite double bed room sleeps 2 This 5-bedroom chalet in Rougemont, Gstaad is the perfect place for a ski holiday with family or friends. With a large balcony and outdoor fireplace, you can enjoy the beautiful mountain views while staying warm and cozy. The chalet also has outdoor furniture so you can relax and enjoy the fresh air. The beds are very comfortable, and the chalet has a garden so you can take a stroll and take in the stunning scenery. This 200 year old Chalet offers a unique experience close to nature.




SURROUNDINGS

Touching nature everywhere, this isolated old Chalet is unique and in the middle of the great Region of Gstaad - Rougemont - Chateau d'Oex. Rougemont is best known for its castle and its traditional farmhouses. The small village lies at the eastern end of the Pays-d'Enhaut and follows the course of the River Saane.



THE SPACE


 Property number:30

 Person Capacity:14

 Bathrooms:3

 Bedrooms:5

 Beds:8

 Property type:Chalet



HOUSE RULES

Please note that a Security Deposit amount will be required upon arrival.

The amount will be authorised on the credit card used to make the booking.

Note this Security Deposit amount will be cancelled, minus any deductions for any damages or missing items.

The property is non-smoking.

No parties or events are allowed without prior notice.

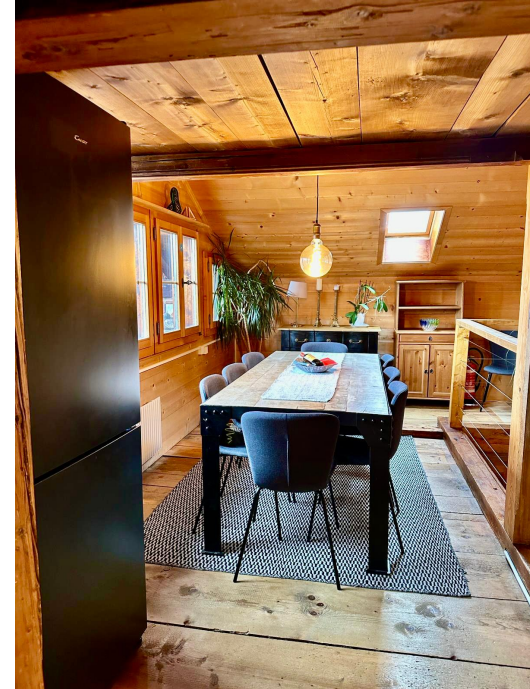
The home may be pet friendly with prior approval.

Please inquire to make a request for pets.













INCLUDED:



24/7 Support



Professional Cleaning



Wifi



Fully equipped kitchen



Warm hospitality experience



Smoke free property



AMENITIES INCLUDE :



Hot tub



Rural



Pets allowed



Towels provided



Pets live on this property



TV



Dog(s)



Mountain



Mountain view



Dishes and silverware



Long term stays allowed



Oven



Cookware



Laptop friendly workspace



hangers



Cleaning Disinfection



Internet



Fire Extinguisher



Cat(s)



Free parking on street



Wireless Internet



Enhanced cleaning practices



first aid kit



coffee maker



extra pillows and blankets



hot water



toaster



bed linens



Patio or Balcony



Cable TV



private entrance



Dryer



kettle



Essentials



Washer



Hair Dryer



Family/kid friendly



Desk



Heating



Free parking on premises



Iron



Indoor Fireplace



Suitable for infants (under 2



Refrigerator



Path to entrance lit at night

years)



Suitable for children (2-12 years)



Kitchen



Shampoo



Stove



+41 79 489 70 21

ira@smilinghouse.ch

Mettenstr. 16, CH-3780 Gstaad,
Switzerland

www.smilinghouse.ch

Smiling House

SmilingHouseLuxury